

EXAM RESULT

Midterm exam in GRA6035 Mathematics 11/10/2019

Summary

Grade A-B	57.2%
Grade F	4.8%
Average score	14.1p (B)

Comments

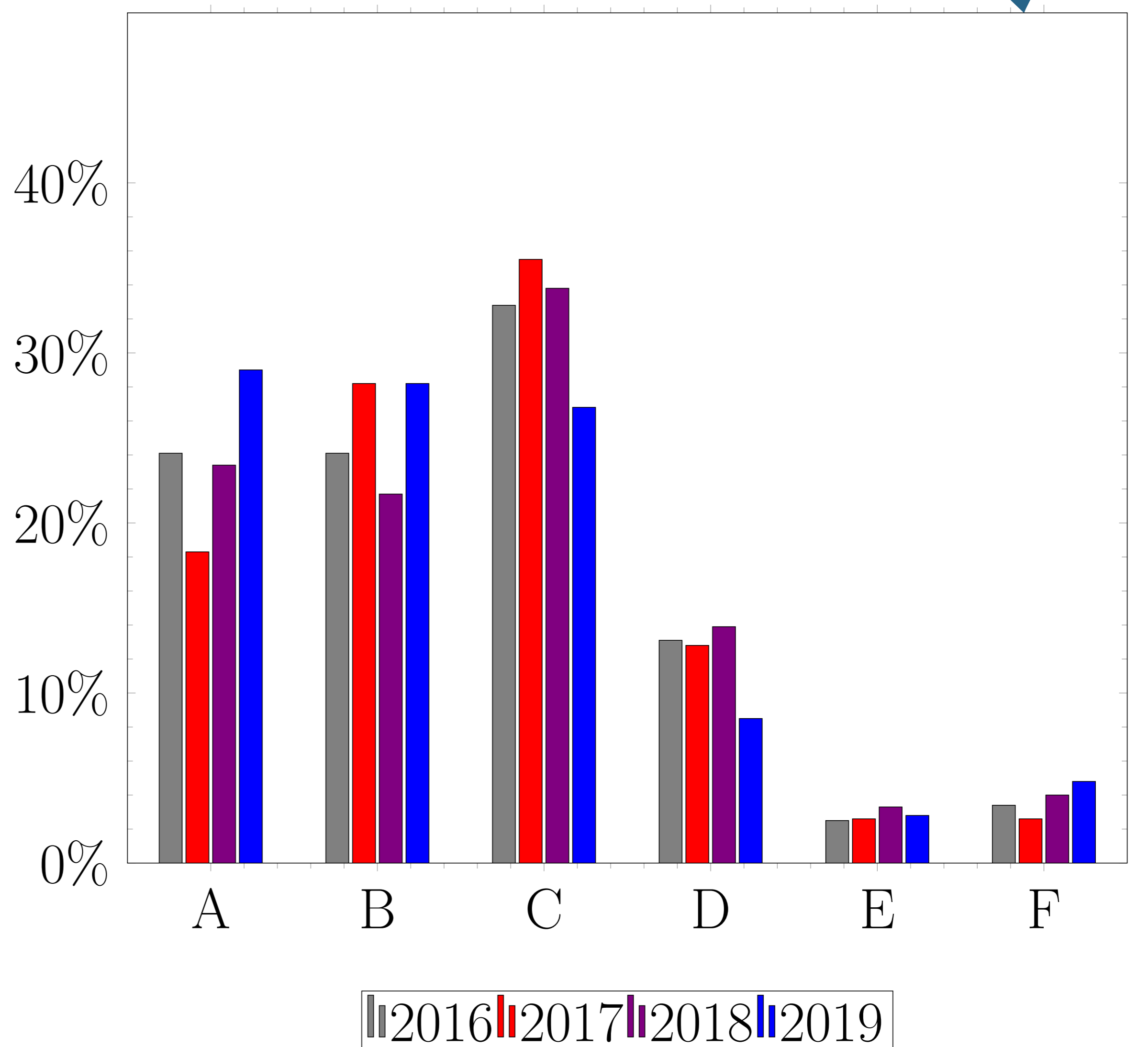
The results on the midterm exam were **overall very good**. Question 7,8 had the lowest score, and Question 5 in addition had a quite low answering rate. This was to a large extent expected, as these were among the most difficult questions, especially Question 7. Otherwise, I noticed that many answered B on Question 8 (an error caused by mixing up the dimension of the nullspace and the column space of A). A summary of scores is given in the table below.

Average score per problem

	Correct A.	Wrong A.	Unansw.
Score:	3p	-1p	0p
Question 1:	79%	18%	3%
Question 2:	78%	15%	7%
Question 3:	82%	15%	3%
Question 4:	87%	7%	6%
Question 5:	71%	11%	18%
Question 6:	64%	31%	5%
Question 7:	15%	42%	43%
Question 8:	50%	26%	24%

Detailed solutions to all questions can be found at www.dr-eriksen.no.

Grade distribution last 4 years



Grading scale

