

- Kristina (Rognlien Dahl)
- kristina.r.dahl@bi.no OR  
It's learning

EBA 1180  
Spring 24  
sect. 1

- Info: Lecture plan, lecture notes, exercise sheets,  
messages: It's learning. (dr.eriksen.no)

Exams: Final exam + retake exams

Topics

- Integration
- Matrix and vector computations
- Functions in two variables + everything from last semester

NEW TOPIC: Integration

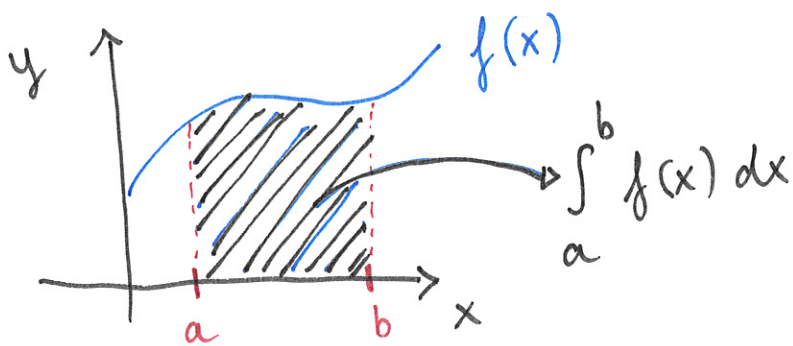
Definite integrals

Def: (Definite integral)

$\int_a^b f(x) dx =$  area of the region between the graph of  $f$  and the  $x$ -axis in  $[a, b]$

integration sign  $\int$   
 $a$  → integration bounds: lower bound  
 $b$  → integration bounds: upper bound  
 $f(x)$  → function we're integrating

Read: "Integral from  $a$  to  $b$  of  $f(x) dx$ "

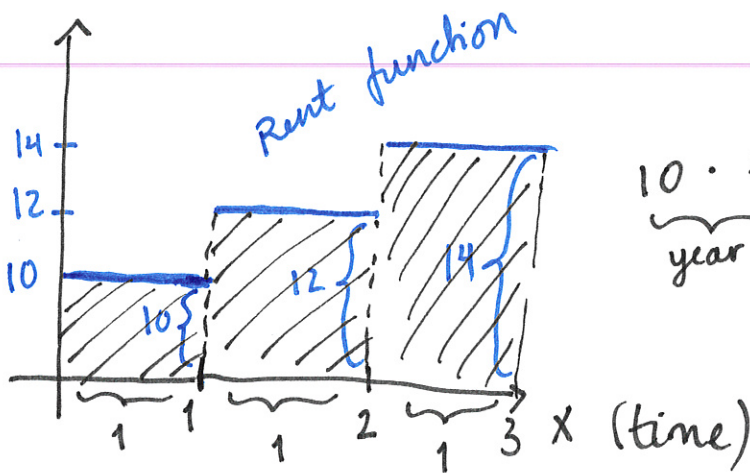


- ASSUMPTIONS:
- i)  $f(x)$  is a continuous function on  $[a, b]$
  - ii)  $f(x) \geq 0$  on  $[a, b]$
  - iii)  $a < b$

Ex: Rental income over 3 years

Total rent income:

Rent changed per year



$$10 \cdot 1 + 12 \cdot 1 + 14 \cdot 1$$

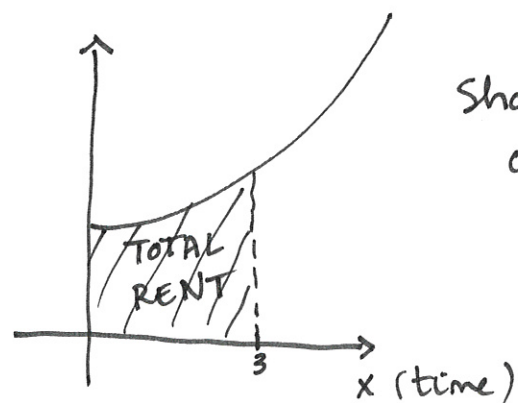
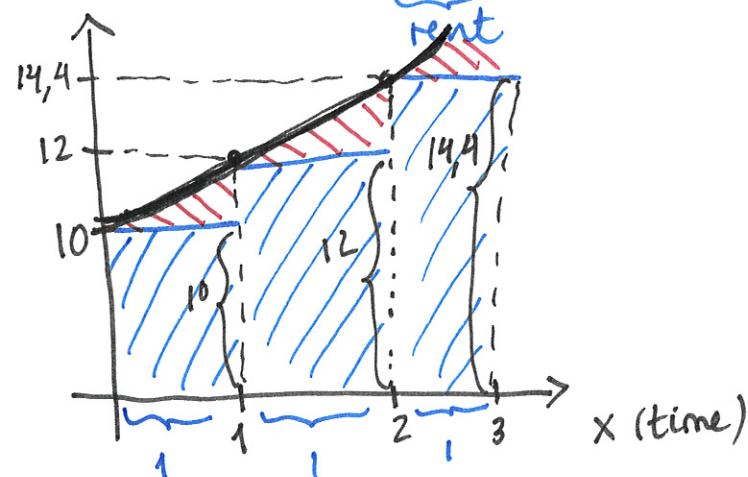
year 1      year 2      year 3

$$= 36$$

= area of the rectangles under graph of rent-function

Now: Assume we have a continuously changing rent:

$$f(x) = 10 \cdot 1, 2$$



Shape of curve

Total rent income over 3 years

$$= \int_0^3 10 \cdot 1,2^x dx = \text{area under the graph between 0 and 3}$$

$$f(0) \cdot 1 + f(1) \cdot 1 + f(2) \cdot 1$$

$$\approx 10 \cdot 1 + 12 \cdot 1 + 14,4 \cdot 1 = 36,4$$

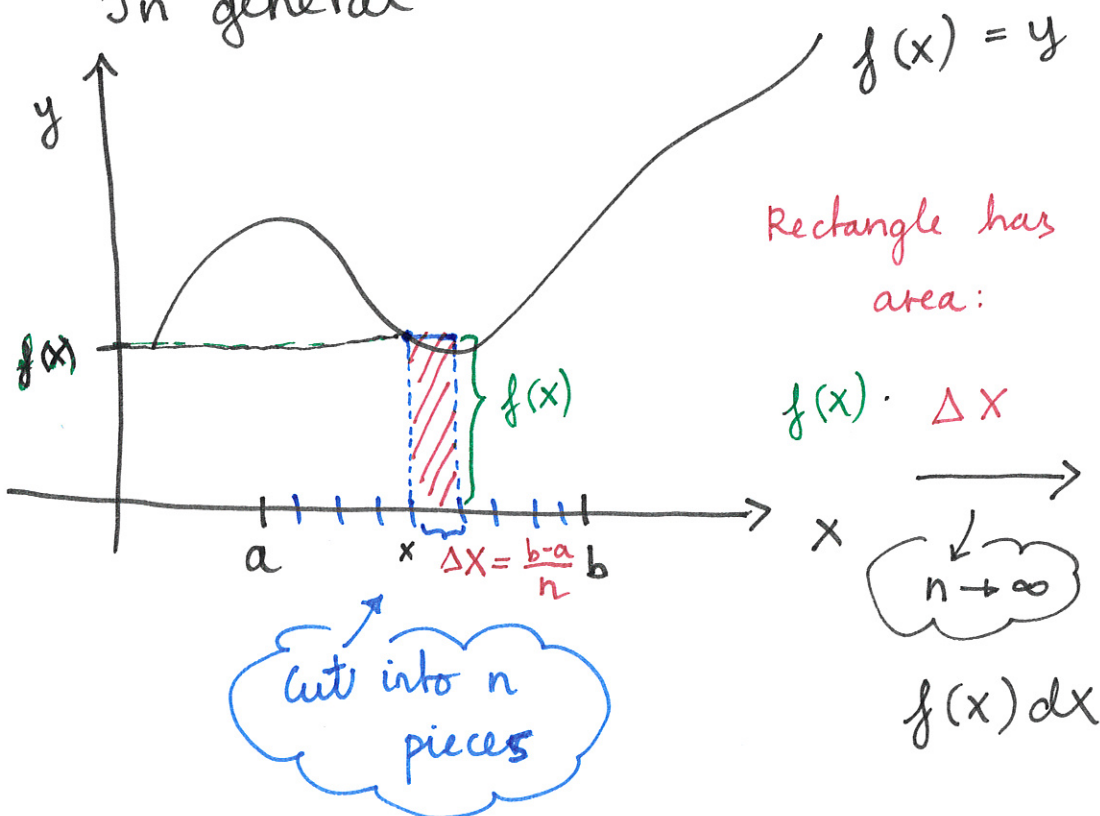
Riemann sum

NB: Approximation! Missing some bits.

Exercise: How to make approximation better?

Idea make width/increments smaller.

NOTE: In general



# Anti-derivatives and indefinite integrals

Def: (Antiderivative)

An antiderivative of a function  $f(x)$  is a function

$$F(x) \text{ s.t. } \underline{F'(x) = f(x)}.$$

Ex:  $f(x) = 2x \Rightarrow F(x) = x^2$

because  $\underline{F'(x) = (x^2)' = 2x = \underline{f(x)}}$

Q: Can you think <sup>of</sup> another antiderivative of  $f(x)$ ?

Say:  $F(x) = x^2 + 1$ , because  $F'(x) = (x^2 + 1)' = 2x (= f(x))$

Or more generally:

$$F(x) = x^2 + C, \text{ because}$$

$$F'(x) = (x^2 + C)' = 2x (= f(x))$$

FACT: If  $f(x)$  has an antiderivative  $F(x)$ , then any other antiderivative can be written as  $F(x) + C$  where  $C$  is a constant.



## Def (Indefinite integral):

The indefinite integral of a function  $f(x)$  is

$$\int f(x) dx = \underbrace{F(x) + C}$$

All antiderivatives  
of  $f(x)$

where  $F'(x) = f(x)$ .

Ex:  $\int 2x dx = x^2 + C$

integration constant

## Integration rules

How to compute  $\int f(x) dx$  ?

ANTI-DIFFERENTIATE

Ex:  $\int 3 + x + x^2 dx = 3x + \frac{1}{2}x^2 + \frac{1}{3}x^3 + C$

CHECK: Differentiate the answer:

$$(3x + \frac{1}{2}x^2 + \frac{1}{3}x^3 + C)' = 3 + \frac{1}{2} \cdot 2x + \frac{1}{3} \cdot 3x^2$$

$$= 3 + x + x^2$$

THE SAME!

# INTEGRATION RULES

i) Power rule:  $\int x^n dx = \frac{x^{n+1}}{n+1} + C \quad (n \neq -1)$

ii)  $\int \frac{1}{x} dx = \ln|x| + C$

Integral of sum is the sum of

iii)  $\int u(x) + v(x) dx$  the integrals:

$$= \int u(x) dx + \int v(x) dx$$

Multiplied constants can be moved outside the integral:

iv)  $\int c \cdot u(x) = c \int u(x) dx$  (c is a constant)

v) Exponentials:  $\int e^x dx = e^x + C$

$$\int a^x dx = \frac{1}{\ln(a)} a^x + C \quad (a > 0)$$

$(a^x)' = a^x \ln(a)$

NOTE: Need to add integration constant when solving indefinite integral.

Ex:  $\int 3x^5 dx = 3 \int x^5 dx = 3 \cdot \frac{x^{5+1}}{5+1} + C$

$= 3 \frac{x^6}{6} + C$

$= \frac{1}{2} x^6 + C$

Exercise:  $\int 3x^5 + 6x^{12} dx$

iii)  $= \int 3x^5 dx + \int 6x^{12} dx$

$= \frac{1}{2} x^6 + 6 \frac{x^{13}}{13} + C$

ii)  
+ prev. ex.  
+ i)

$= \frac{1}{2} x^6 + \underline{\underline{\frac{6}{13} x^{13} + C}}$